

Mastercam[®]

Family of Products



Mill • Lathe • Router • Wire • Art • Solids • Design • Mastercam[®] for SolidWorks[®]

The perfect fit for your work

CAD/CAM for the most important job—yours.

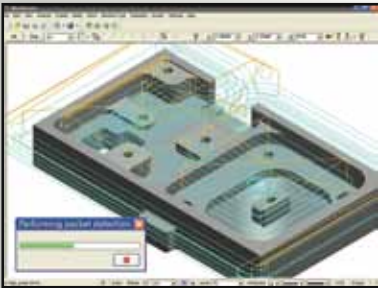
There is no job more important than the one you're working on. The new Mastercam X5 suite of CAD/CAM products is designed with real-world programming needs at the forefront, making your work easier and faster than ever before. And because Mastercam can grow with your needs, you have the long-term confidence, experience, and support from the #1 CAD/CAM developer in the world.

Mastercam X5 offers 2- through 5-axis milling and routing, turning, wire EDM, artistic relief cutting, 2D and 3D design, surface, and solid modeling.

Why Choose Mastercam? Here are just a few reasons:

- 1. Streamlined.** A remarkably easy interface has you cutting parts quickly.
- 2. Comprehensive.** Get the most robust 2- through 5-axis toolpath generation available.
- 3. Fast.** Mastercam supports multi-core processing.
- 4. Smart.** Intelligent toolpaths and CAD Change Recognition know when your part is edited.
- 5. Automated.** Feature Based Machining delivers push-button 2D programming.
- 6. Powerful.** New toolpaths assure maximum quality and accuracy.
- 7. Specific.** Tailored settings make the most of specific tools.
- 8. Flexible.** Import virtually any CAD source file and choose Add-In utilities tailored to your needs.
- 9. Supported.** Work with the most professional, knowledgeable reseller network in the industry.
- 10. Here to stay.** Partner with the most widely used CAM software in the world.

Milling



Mastercam Mill Level 1

Associative CAD/CAM for 2½-axis machining and design. Builds on Mastercam Design functionality, plus:

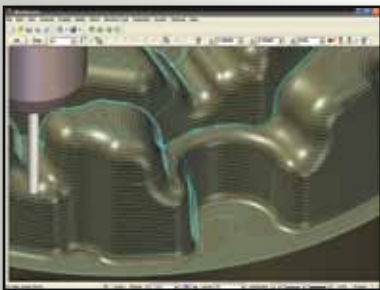
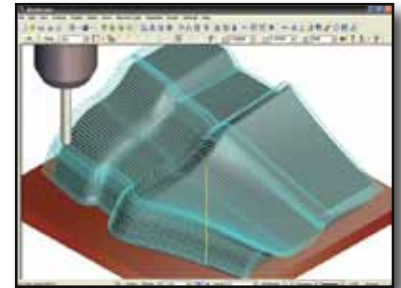
- Automated 2D Feature Based Machining on solids
- Flexible contour, pocket, and drilling
- CAD file Change Recognition

- Highly efficient dynamic milling
- Tombstone programming / multiaxis positioning
- Automated feed rate optimization
- Solids-based toolpath verification

Mastercam Mill Level 2

Associative CAD/CAM for limited 3-axis machining and design. Builds on Mastercam Design & Level 1 functionality, plus:

- Single surface and limited multisurface finishing
- Single surface and limited multisurface roughing
- Toolpath projection onto a complex surface



Mastercam Mill Level 3

Associative CAD/CAM for full 3-axis machining and design. Builds on Mastercam Design, Level 1 & 2 functionality, plus:

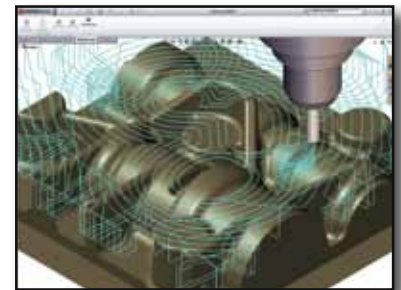
- Comprehensive, easy, and associative multisurface roughing and finishing
- High Speed Machining efficiently cuts complex parts

- Highly efficient optimized roughing
- Remaining stock removal
- Machine surfaces, solids, STL files, and wireframe

Mastercam for SolidWorks

Fully-integrated associative 3-axis machining that runs directly from within SolidWorks 2009 (or later) installation.

- High Speed Machining for efficient cutting of complex parts
- Contouring, pocketing, and drilling, including automated Feature Based Machining
- Open Mastercam for SolidWorks files in Mastercam, complete with all toolpaths
- Familiar Mastercam Operations Manager and parameter screens



Modeling



Mastercam Design

Powerful 3D CAD software also included in Mastercam Mill, Lathe, Router, and Wire.

- Easy geometry modeling and editing
- Advanced geometry creation, including NURBS curves and surfaces
- 2D and 3D associative dimensioning
- Surface extension, blending, trimming, splitting, and variable filleting

+ Mastercam Solids

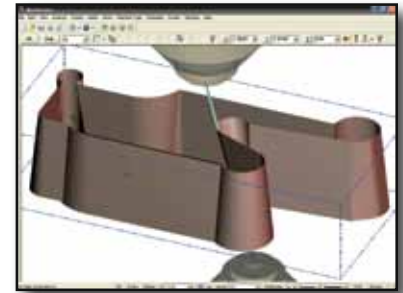
Available as an Add-In. See back.

Wire EDM

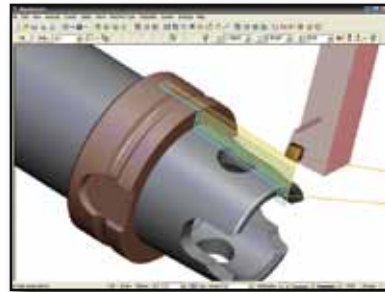
Mastercam Wire

Associative CAD/CAM for wire EDM. Builds on Mastercam Design functionality, plus:

- Advanced tapering in both 2-axis and 4-axis wirepath creation
- Advanced synchronization capabilities
- Efficient lead-ins and lead-outs
- Automatic corner filleting and skim cut definition
- Efficient tab creation and management
- Wirepath filtering significantly reduces program size



Turning

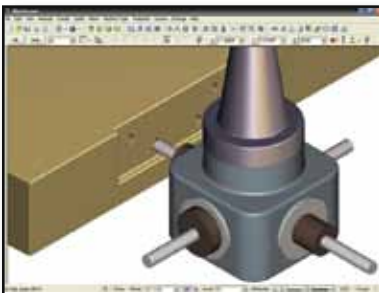


Mastercam Lathe

Associative CNC programming system for turning. Builds on Mastercam Design functionality, plus:

- Roughing, finishing, threading, grooving, boring, drilling, and cut off
- Editable tool, material, and operation libraries
- Automatic tool compensation
- Solids-based toolpath verification
- C- and Y-axis machining, with full multiaxis (Mill/Turn) capabilities when combined with Mastercam Mill

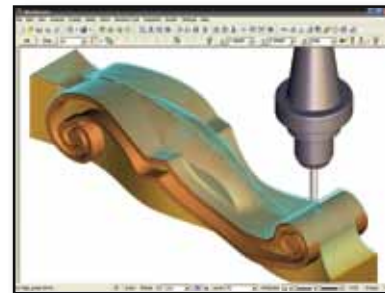
Router Programming



Mastercam Router Plus

Associative CAD/CAM for limited 3-axis router work. Builds on Mastercam Design and Router functionality, plus:

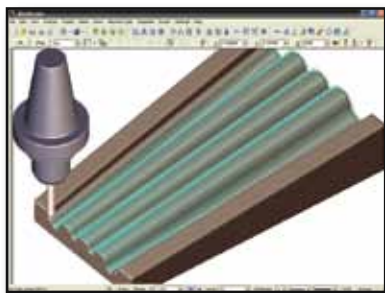
- Single surface and limited multisurface roughing
- Single surface and limited multisurface finishing
- Toolpath projection onto a complex surface



Mastercam Router

Associative CAD/CAM specifically designed for routers. Builds on Mastercam Design functionality, plus:

- Flexible 2D machining, including 2D Feature Based Machining on solids
- Tab creation and editing
- Advanced part and toolpath nesting
- Block drill and aggregate head support
- Support for raster-based files (JPEG, TIFF, and more)
- Powerful engraving



Mastercam Router Pro

Associative CAD/CAM for full 2-axis and 3-axis router work. Builds on Mastercam Design, Router, & Router Plus functionality, plus:

- Easy multisurface roughing
- Fast multisurface finishing
- Cleanup machining to reduce final hand work

+ Mastercam Multiaxis

Available as an Add-In. See back.

Powerful Add-Ins

Mastercam Add-Ins are custom utilities developed for specialized applications. Just a few of these time-saving tools include automatic core/cavity separation, automatic parting line generation and draft angle analysis, EDM tool creation, nesting, and engraving. A wide variety of Add-Ins are available from Mastercam Resellers and Business Partners.

+ Mastercam Solids Add-In

Fully integrated Parasolid®-based solid modeler that adds on to Mastercam Design, Mill, Lathe, Router, and Wire.

- Powerful solid construction techniques
- Fast shelling, filleting, and chamfering
- Import and export Parasolid files
- History tree for easy operation editing
- Combine solids and surfaces in the same model
- Fully integrated, associative machining when combined with Mastercam Mill



+ Mastercam Art Add-In

Artistic CAD/CAM for creative organic modeling and machining. Adds on to Mastercam Mill or Mastercam Router systems.

- Create 3D sculpted models from simple 2D artwork
- History tree for easy editing at any stage in your process
- Machine your pieces with specialized toolpaths



+ Mastercam Multiaxis Add-In

Associative CAD/CAM for 4- and 5-axis machining that adds on to Mastercam Mill Level 3 or Mastercam Router Pro systems.

- 4-axis and 5-axis multisurface roughing and finishing
- 5-axis contour cutting and trimming
- Full control over all aspects of tool approach, motion, and retract
- Full multiaxis solids-based verification

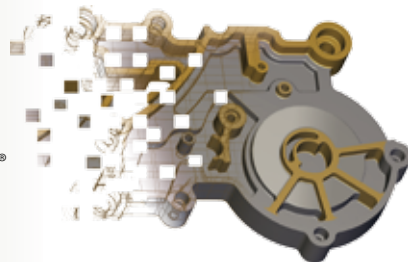


+ Curve and Drill 5-Axis Add-In

Basic 5-axis cutting for trimming and drilling operations that can be added to Mill Level 1 for a cost-effective multiaxis package.

Data Translators

All Mastercam products include powerful data translators for IGES, Parasolid®, SAT (ACIS solids), AutoCAD® (DXF, DWG) Autodesk® Inventor® (IPT, IAM), SolidWorks® (SLDPRT, SLDASM, SLDDRW), Solid Edge®, STEP, EPS, CADL, STL, VDA, and ASCII. Direct translators for CATIA®, Pro/E®, and more are also available. Special no-charge Mastercam Direct add-ins put a Mastercam launcher in your SolidWorks, Solid Edge, or AutoCAD Inventor toolbars.



System Requirements

- **Processor:** 2.5 GHz (minimum), 32-bit or 64-bit Intel®-compatible processor
- **Operating System:** Windows® XP, Windows Vista® (Business or Ultimate), or Windows 7 (Professional or Ultimate) including the latest service packs and recommended updates
- **Memory:** 2 GB (minimum), 3 GB available hard disk space (minimum)
- **Graphics:** 256 MB OpenGL-compatible graphics card, 1280 x 1024 pixel screen resolution (minimum)
- **Mouse:** Windows-compatible 2-button or 3-button mouse (or with middle mouse wheel)

Mastercam®

cnc software, inc.

671 Old Post Road, Tolland, CT 06084 USA
 (800) 228-2877 • (860) 875-5006 • Fax (860) 872-1565
 www.mastercam.com • mcinfo@mastercam.com

